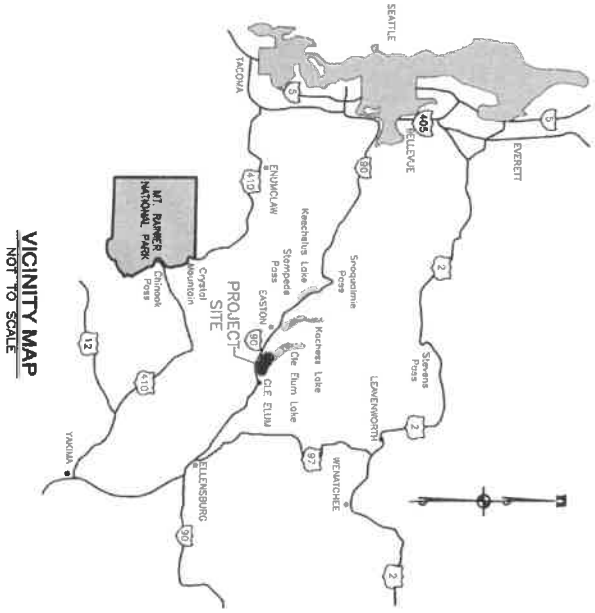


A PORTION OF SECTION 13, TWP. 20 N., RGE. 14 E. AND SECTION 18, TWP. 20 N., RGE. 15 E., W.M., KITTITAS COUNTY, WASHINGTON



VICINITY MAP
NOT TO SCALE

BASIS OF HORIZONTAL & VERTICAL DATUMS

BASIS OF HORIZONTAL DATUM:
WASHINGTON STATE PLANE COORDINATE SYSTEM, SOUTH ZONE, NAD83/91.
ELEVATION DATUM: MEAN SEA LEVEL (MSL) AS SHOWN ON U.S. COAST AND GEODETIC SURVEY CHARTS. HORIZONTAL DISTANCES SHOWN CONVERT TO GRID DISTANCES, MULTIPLY BY A COMBINED AVERAGE SCALE FACTOR OF 0.999870387.

BASIS OF VERTICAL DATUM:
NAD 83
NGVD 29
MARK: DISK 1, 525, 1982, LOGO MARK - NGS NGVD 29 ELEVATION = 2028.05 LOCATION: SET IN TOP NORTH END OF WEST CURB OF THE INTERSTATE 90 HIGHWAY OVERPASS ALONG STATE HIGHWAY 90X.

OWNER

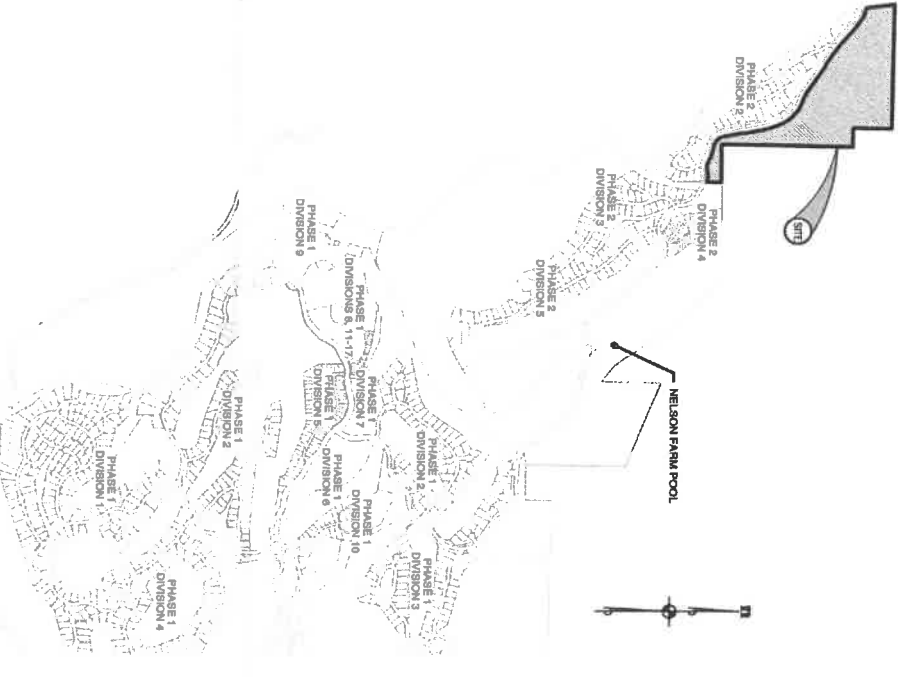
NEW SUNCADIA LLC, A DELAWARE LIMITED LIABILITY COMPANY
1111 11TH AVENUE, SUITE 200
CLE ELIUM, WASHINGTON 98922
TELEPHONE (509) 649-3000
FACSIMILE (509) 648-6251

GENERAL NOTES

VACATION HOMESITES RANGING IN SIZE FROM 0.33 ACRES TO 1.04 ACRES.
TOTAL ACREAGE PHASE 2, DIVISION 6 = 62.08 ACRES
TOTAL ACREAGE PHASE 2, DIVISION 7 = 4.28 ACRES
TOTAL NUMBER OF LOTS = 9
TOTAL NUMBER OF TRACTS = 14

WATER & SEWER NOTES

SEE PRELIMINARY SITE AND UTILITY ENGINEERING SUMMARY.



LOCATION MAP
NOT TO SCALE

LEGAL DESCRIPTION

TRACT 7-2 OF SUNCADIA PHASE 2, DIVISION 2, IN THE COUNTY OF KITTITAS STATE OF WASHINGTON, AS PER PLAT THEREOF RECORDED IN BOOK 10 OF PLATS, PAGES 170-183, RECORDS OF SAID COUNTY.

TAX PARCEL MAP NOS.

20-14-13050-0081, 20-14-13050-0094, 20-14-13050-0095, 20-14-13050-0096

NO.	REVISION

ESM CONSULTING ENGINEERS, LLC
25405 8th Ave S, Suite 208
Federal Way, WA 98003

www.esmcivil.com

Civil Engineering | Land Surveying | Land Planning
Public Works | Project Management | Landscape Architecture

REG. NO. 39-013
EXPIRES 12/31/2023

NEW SUNCADIA LLC

SUNCADIA PHASE 2 DIVISION 6 (NELSON RIDGE)

PRELIMINARY PLAT

KITTITAS COUNTY WASHINGTON

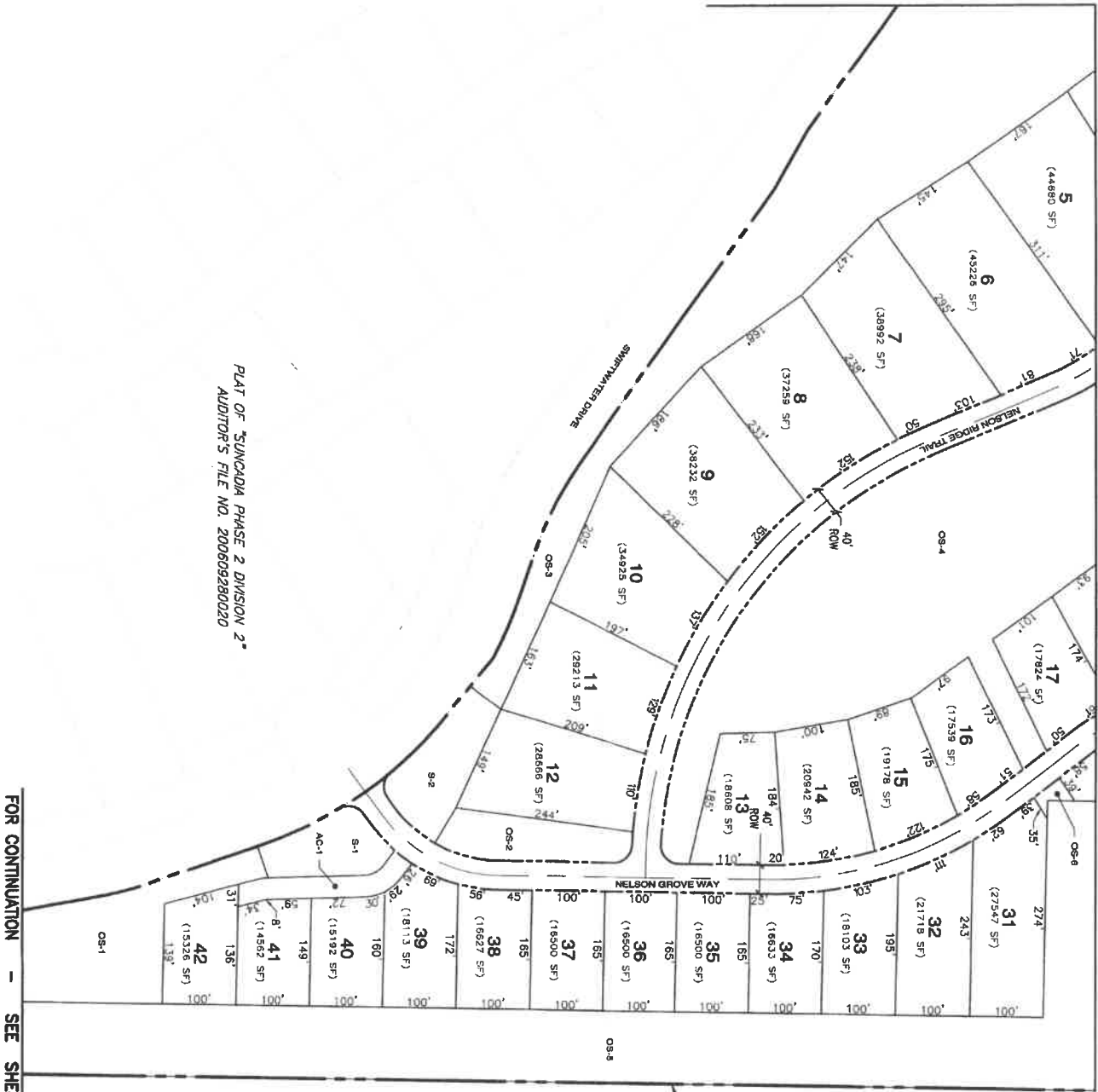
JOB NO.: 986-812-080
ENC. NAME: PP-01
DESIGNED BY: JLM
DRAWN BY: LBS
CHECKED BY: JLM
DATE: 11/12/2020
PRINT DATE: 11/12/2020
SHEET

PP-01

A PORTION OF SECTION 13, TWP. 20 N., RGE. 14 E. AND SECTION 18 TWP. 20 N., RGE. 15 E., W.M.,
KITITAS COUNTY, WASHINGTON

FOR CONTINUATION - SEE SHEET PP-04

FOR CONTINUATION - SEE SHEET PP-03



PLAT OF "SUNCADIA PHASE 2 DIVISION 2"
AUDITOR'S FILE NO. 200609280020

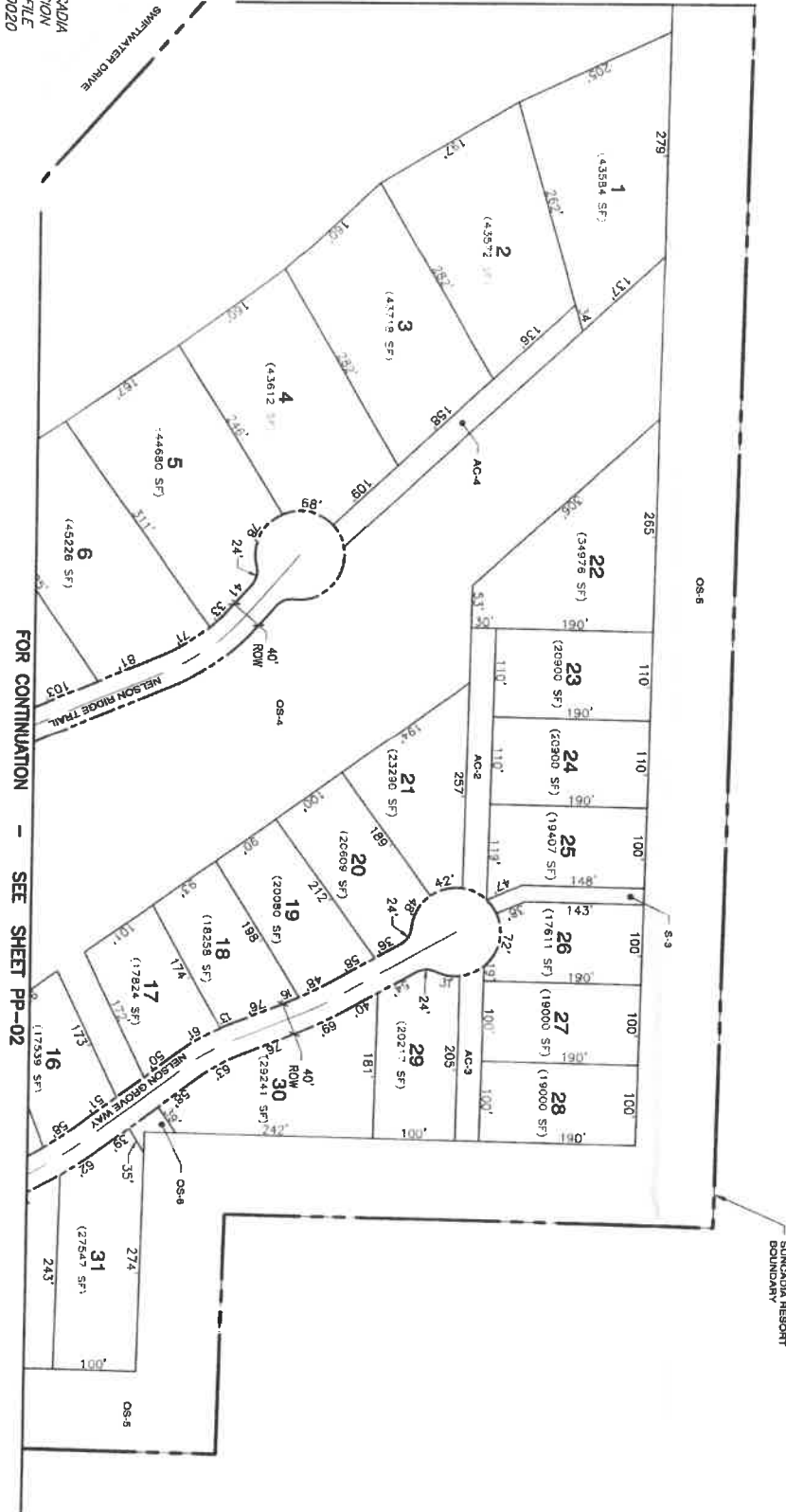
NEW SUNCADIA LLC SUNCADIA PHASE 2 DIVISION 6 (NELSON RIDGE) PRELIMINARY PLAT WASHINGTON	ESM CONSULTING ENGINEERS, LLC 805 1st Ave. S. Federal Way, WA 98003 www.esmcivil.com Civil Engineering Public Works Land Surveying Project Management Land Planning Landscape Architecture	JOB NO.: 998-812-000 DWG. NAME: PP-02 DESIGNED BY: JAK DRAWN BY: JAK CHECKED BY: LAB DATE: 11/12/2020 PRINT DATE:	SHEET PP-02
		KITITAS COUNTY	REVISIONS NO. DESCRIPTION DATE

A PORTION OF SECTION 13, TWP. 20 N., RGE. 14 E. AND SECTION 18, TWP. 20 N., RGE. 15 E., W.M.,
KITITAS COUNTY, WASHINGTON

FOR CONTINUATION - SEE SHEET PP-04

PLAT OF "SUNCADIA
PHASE 2 DIVISION
2" AUDITOR'S FILE
NO. 200809280020

FOR CONTINUATION - SEE SHEET PP-02



TRACT LEGEND
AC ACCESS
AS ADJACENT
S SERVICE

NEW SUNCADIA LLC
SUNCADIA PHASE 2 DIVISION 6
(NELSON RIDGE)
PRELIMINARY PLAT
KITITAS COUNTY WASHINGTON

ESM CONSULTING ENGINEERS & LLC
39400 8th Ave S, Suite 205
Federal Way, WA 98003
www.esmcivil.com

Civil Engineering
Public Works

Land Surveying
Project Management

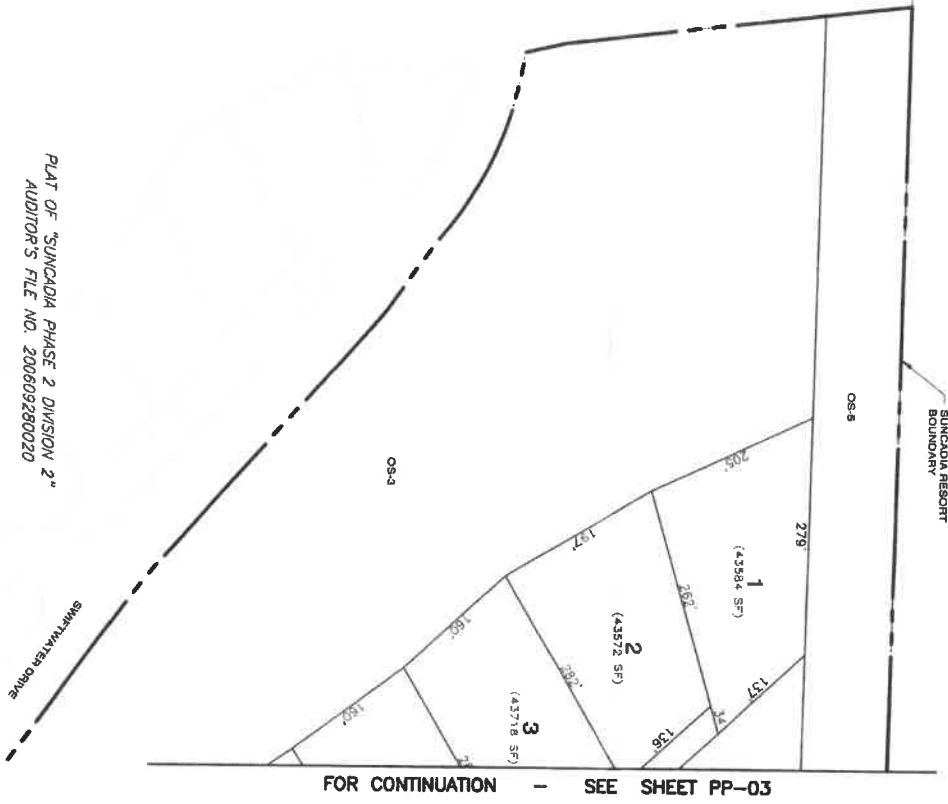
Land Planning
Landscape Architecture

JOB NO.: 999-813-020
DATE: 11/12/2020
DRAWN BY: JLN
CHECKED BY: JLN
DATE: 11/12/2020
SHEET: PP-03

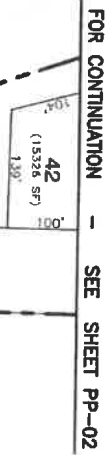
A PORTION OF SECTION 13, TWP. 20 N., RGE. 14 E. AND SECTION 18, TWP. 20 N., RGE. 15 E., W.M.,
KITITAS COUNTY, WASHINGTON

PLAT OF "SUNCADIA PHASE 2 DIVISION 2"
AUDITOR'S FILE NO. 200809280020

PLAT OF "SUNCADIA PHASE 2 DIVISION 2"
AUDITOR'S FILE NO. 200809280020



FOR CONTINUATION - SEE SHEET PP-03



FOR CONTINUATION - SEE SHEET PP-02



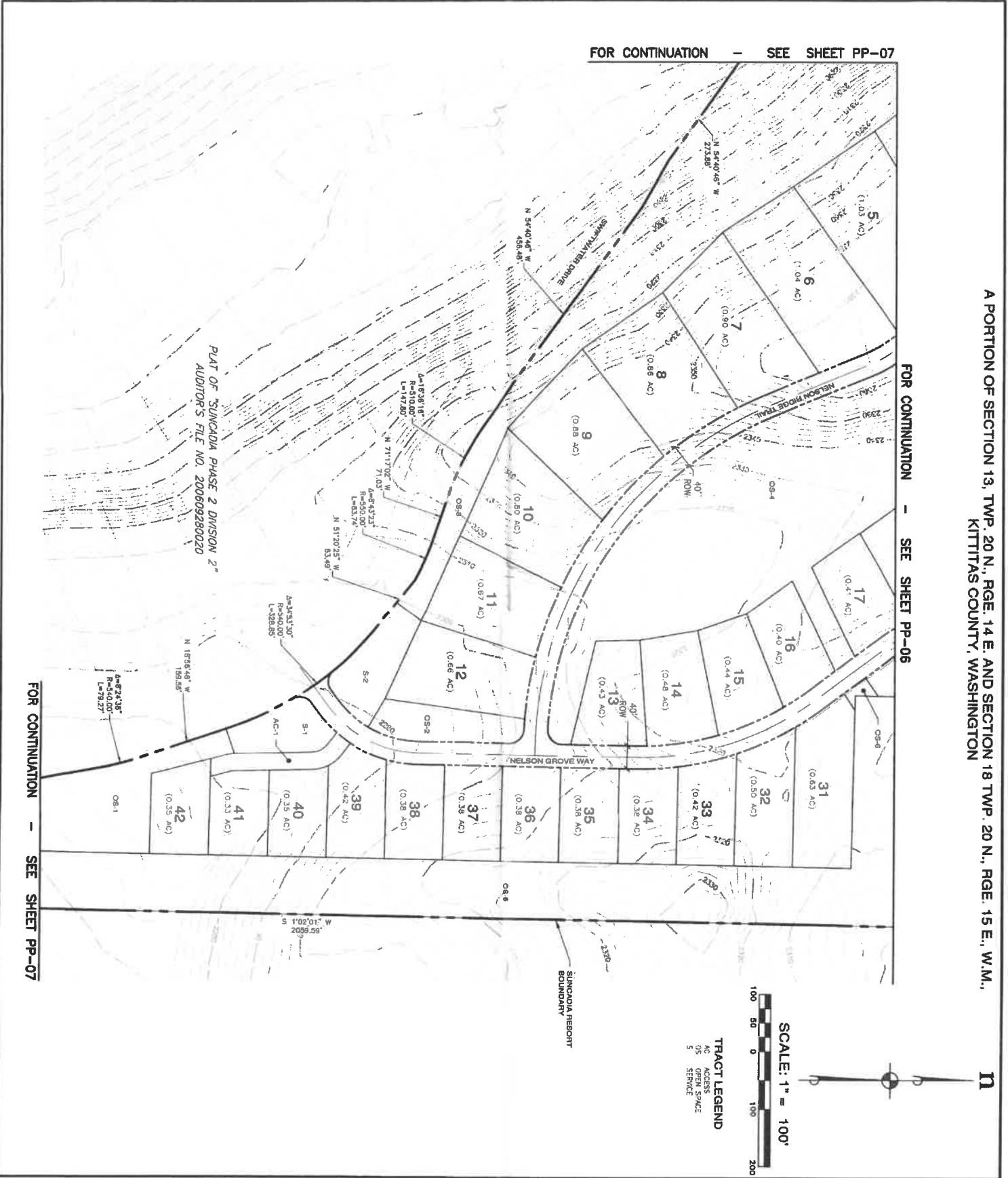
TRACT LEGEND
AC ACCESS
OS OPEN SPACE
S SERVICE

JOB NO. 19-112-000 CADD SCALE 5/8"=1'-0" DESIGNED BY JAM DRAWN BY LJS CHECKED BY 11/13/2020 PRINT DATE SHEET	NEW SUNCADIA LLC SUNCADIA PHASE 2 DIVISION 6 (NELSON RIDGE) PRELIMINARY PLAT KITITAS COUNTY WASHINGTON	ESM CONSULTING ENGINEERS LLC 28400 8th Ave SE, Suite 205 Federal Way, WA 98003 www.esmcivil.com Civil Engineering Public Works Land Surveying Project Management Land Planning Landscape Architecture	REVISIONS NO. DESCRIPTION DATE
	PP-04	KITITAS COUNTY	WASHINGTON

FOR CONTINUATION - SEE SHEET PP-07

A PORTION OF SECTION 13, TWP. 20 N., RGE. 14 E. AND SECTION 18 TWP. 20 N., RGE. 15 E., W.M.,
KITITIAS COUNTY, WASHINGTON

FOR CONTINUATION - SEE SHEET PP-06



FOR CONTINUATION - SEE SHEET PP-07

NEW SUNCADIA LLC

SUNCADIA PHASE 2 DIVISION 6
(NELSON RIDGE)
PRELIMINARY PLAT

KITITIAS COUNTY

WASHINGTON

ESM CONSULTING ENGINEERS, LLC
33400 8th Ave S, Suite 205
Federal Way, WA 98003

www.esmcivil.com

Land Surveying
Project Management

Land Planning
Landscape Architecture

CAD NO.	995-815-005
DRAWN BY	PP-05
CHECKED BY	LAG
DATE	11/12/2020
PROJECT NAME	SHEET
	PP-05

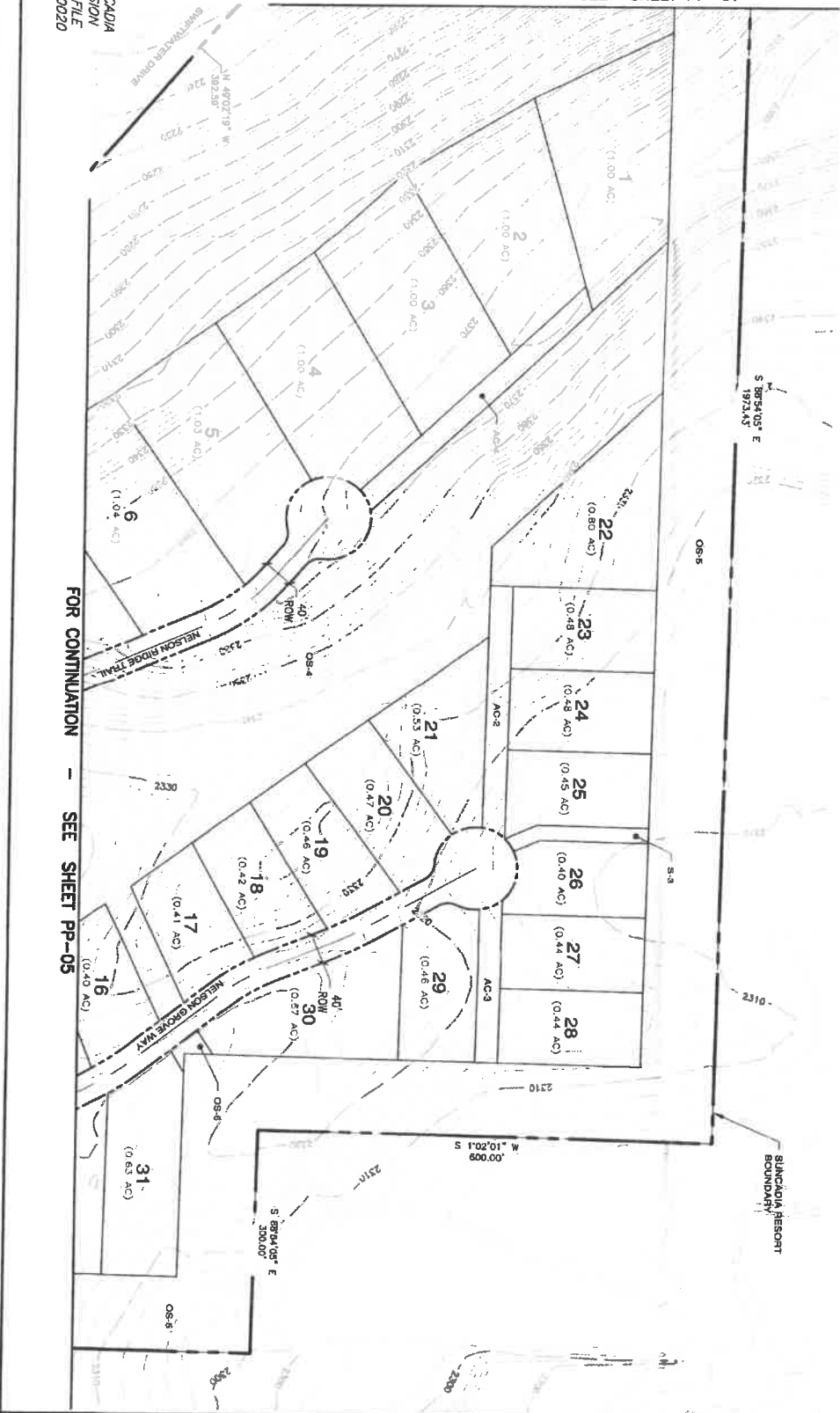
NO.	REVISIONS

PLAT OF SUNCADIA
PHASE 2 DIVISION
2ND AUDITOR'S FILE
NO. 200809280020

FOR CONTINUATION - SEE SHEET PP-07

FOR CONTINUATION - SEE SHEET PP-05

A PORTION OF SECTION 13, TWP. 20 N., RGE. 14 E. AND SECTION 18, TWP. 20 N., RGE. 15 E., W.M.,
KITITAS COUNTY, WASHINGTON



TRACT LEGEND
AC ACCESS
AS ACCESS PLACE
S SERVICE



NEW SUNCADIA LLC
SUNCADIA PHASE 2 DIVISION 6 (NELSON RIDGE) PRELIMINARY PLAT
KITITAS COUNTY WASHINGTON

DATE: 11/12/2020	BY: [Signature]
CHECKED BY: [Signature]	DATE: 11/12/2020
DESIGNED BY: [Signature]	DATE: 11/12/2020
DRAWN BY: [Signature]	DATE: 11/12/2020
APP. NO. 194-13-030	PP-06
2ND AUDIT	1/21
DATE: 11/12/2020	1/21
BY: [Signature]	1/21
DATE: 11/12/2020	1/21
BY: [Signature]	1/21

ESM CONSULTING ENGINEERS, LLC
2340 8th Ave S, Suite 205
Federal Way, WA 98003

www.esmcivil.com

Civil Engineering
Public Works

Land Surveying
Project Management

Land Planning
Landscape Architecture

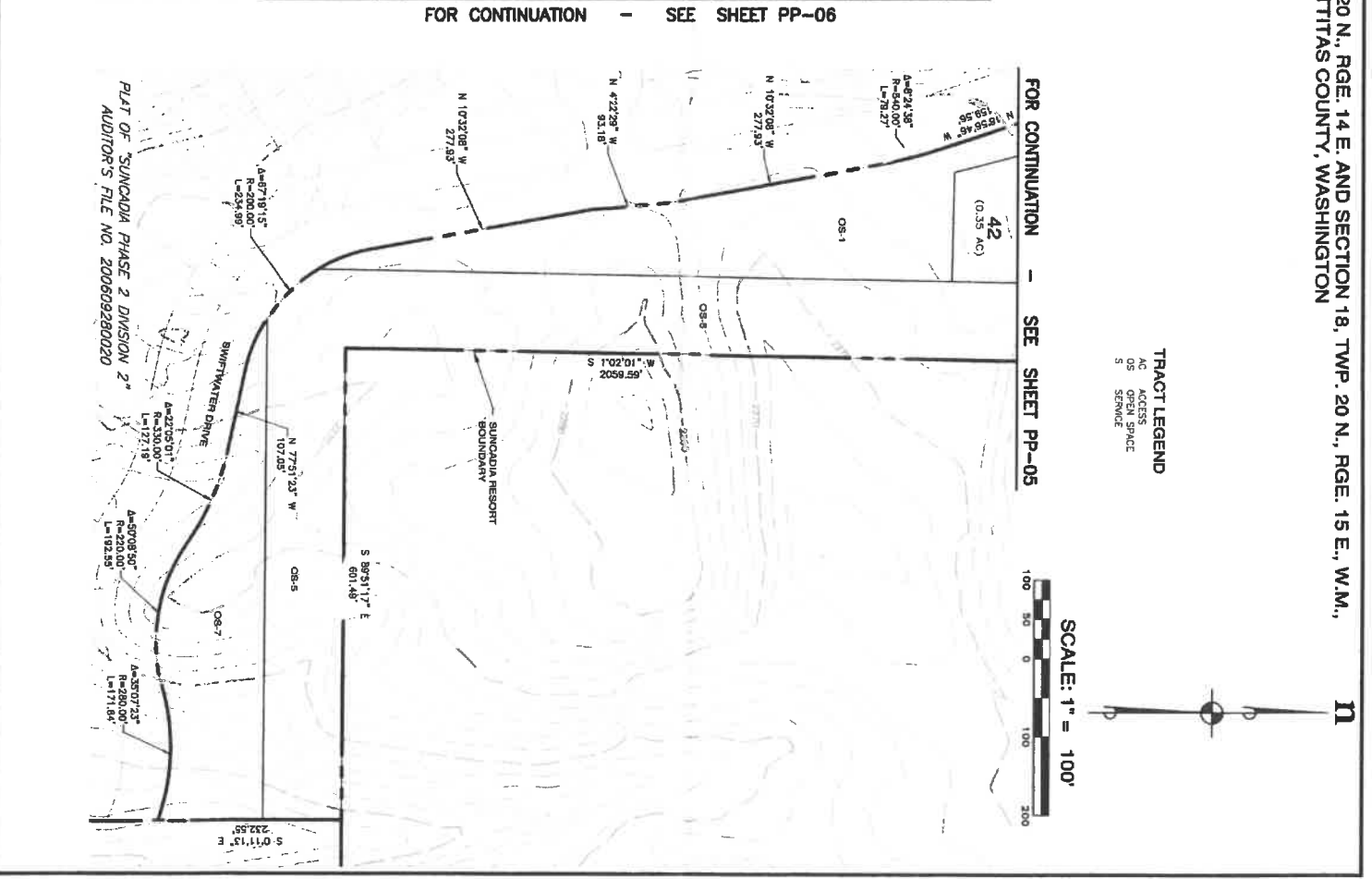
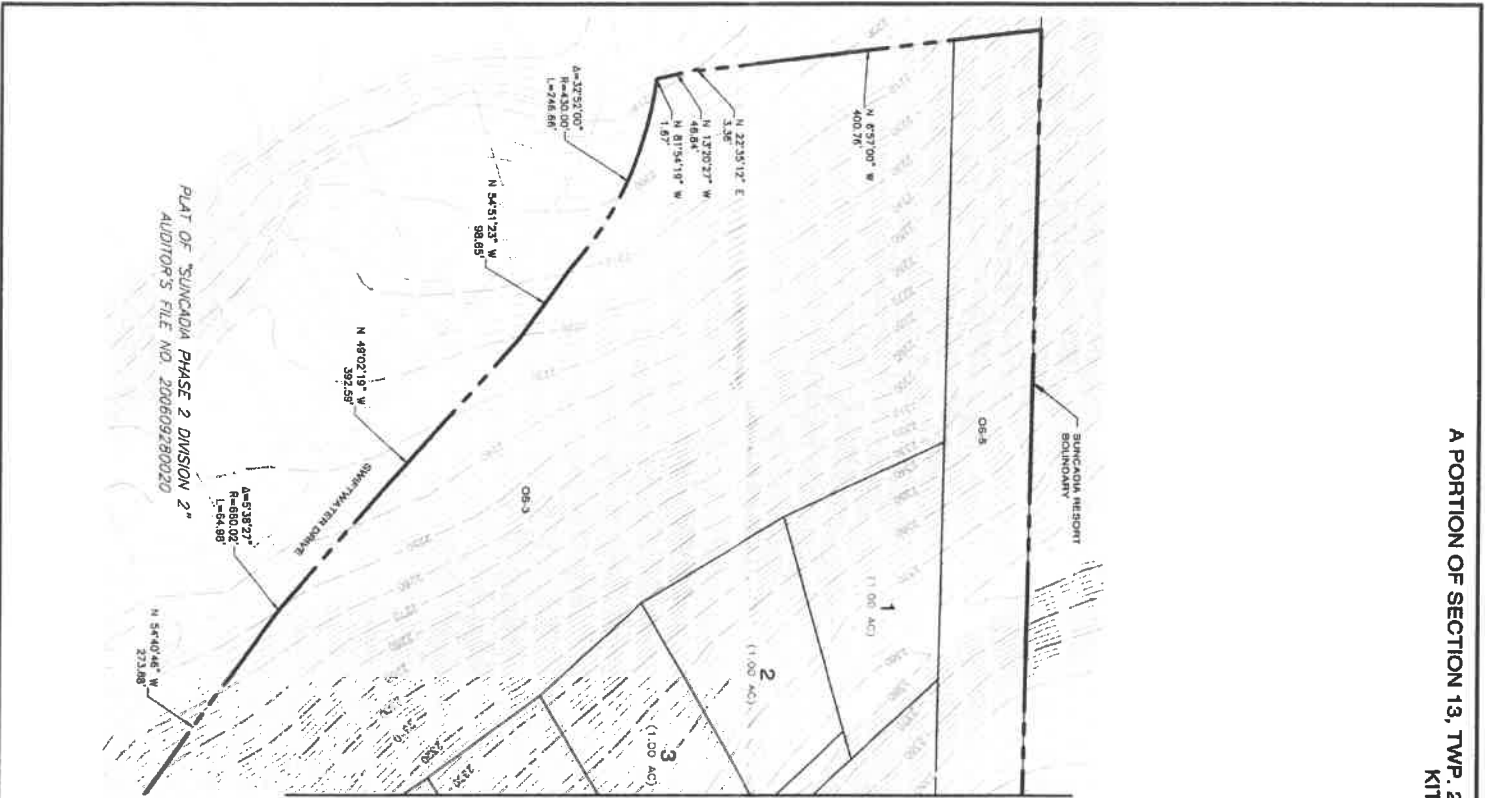
NO.	REVISIONS	DATE

PP-06

2020-11-12

A PORTION OF SECTION 13, TWP. 20 N., RGE. 14 E. AND SECTION 18, TWP. 20 N., RGE. 15 E., W.M.,
KITITAS COUNTY, WASHINGTON

11



TRACT LEGEND
AC ACCESS
OS OPEN SPACE
S SERVICE



<p>PP-07</p> <p>SHEET</p>	<p>LOG NO.: 098-415-802</p> <p>ENR. NO.: 19-07</p> <p>DESIGNED BY: AM</p> <p>CHECKED BY: LBS</p> <p>DATE: 11/17/2020</p>	<p>NEW SUNCADIA LLC</p> <p>SUNCADIA PHASE 2 DIVISION 6 (NELSON RIDGE)</p> <p>PRELIMINARY PLAT</p> <p>KITITAS COUNTY WASHINGTON</p>	<p>ESM CONSULTING ENGINEERS LLC</p> <p>35400 8th Ave S, Suite 205 Federal Way, WA 98003</p> <p>www.esmcivil.com</p> <p>Civil Engineering Public Works</p> <p>Land Surveying Project Management</p> <p>Land Planning Landscape Architecture</p>	<p>REVISIONS</p> <table border="1"> <tr> <th>NO.</th> <th>DESCRIPTION</th> </tr> <tr> <td> </td> <td> </td> </tr> <tr> <td> </td> <td> </td> </tr> </table>	NO.	DESCRIPTION				
	NO.	DESCRIPTION								
<p>DATE: 11/17/2020</p>	<p>DATE: 11/17/2020</p>	<p>DATE: 11/17/2020</p>	<p>DATE: 11/17/2020</p>							